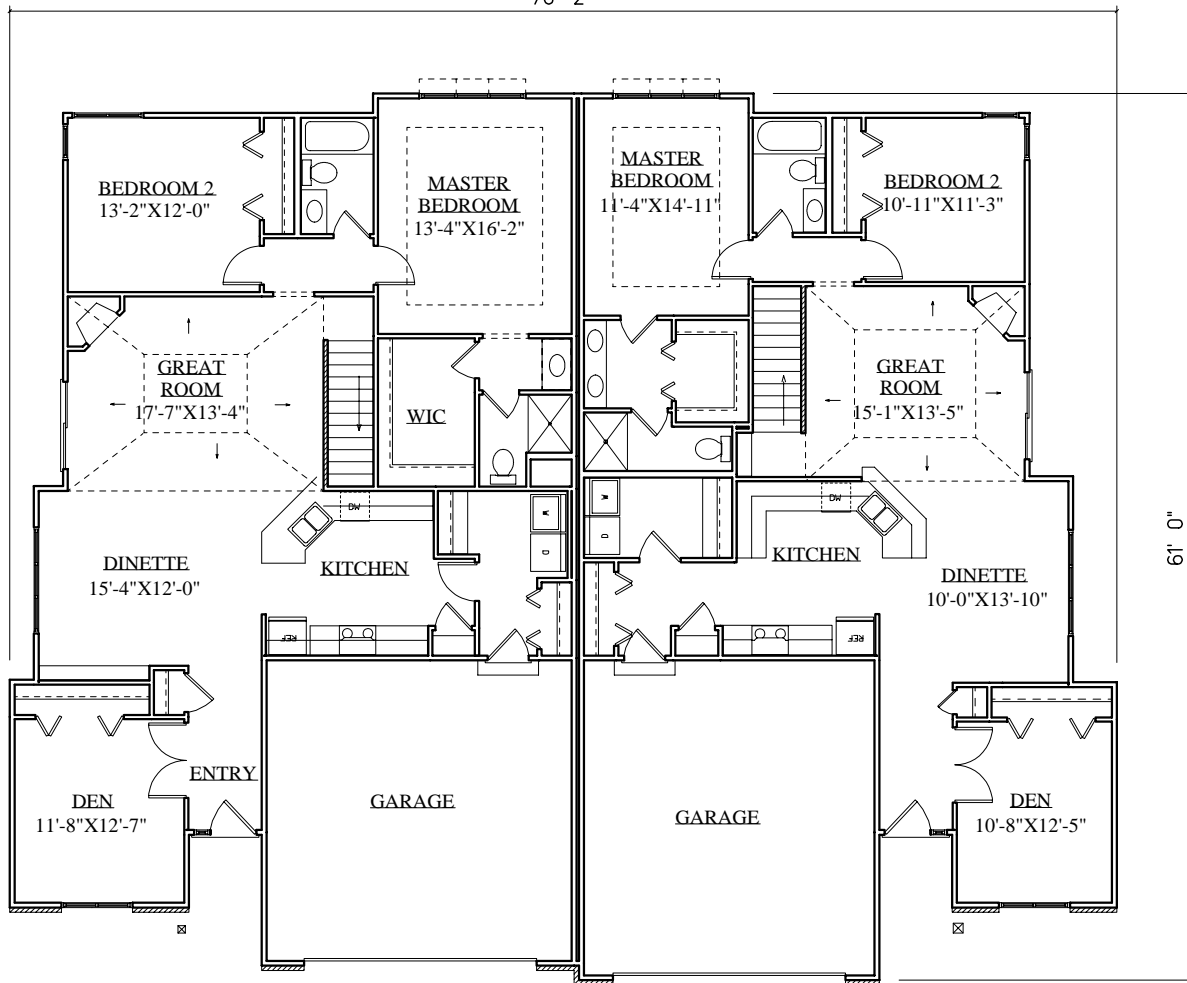


PLAN NO. 1012-05



FRONT ELEVATION

76' 2"



MAIN LEVEL FLOOR PLAN

1,650 SQ. FT. (THIS SIDE)

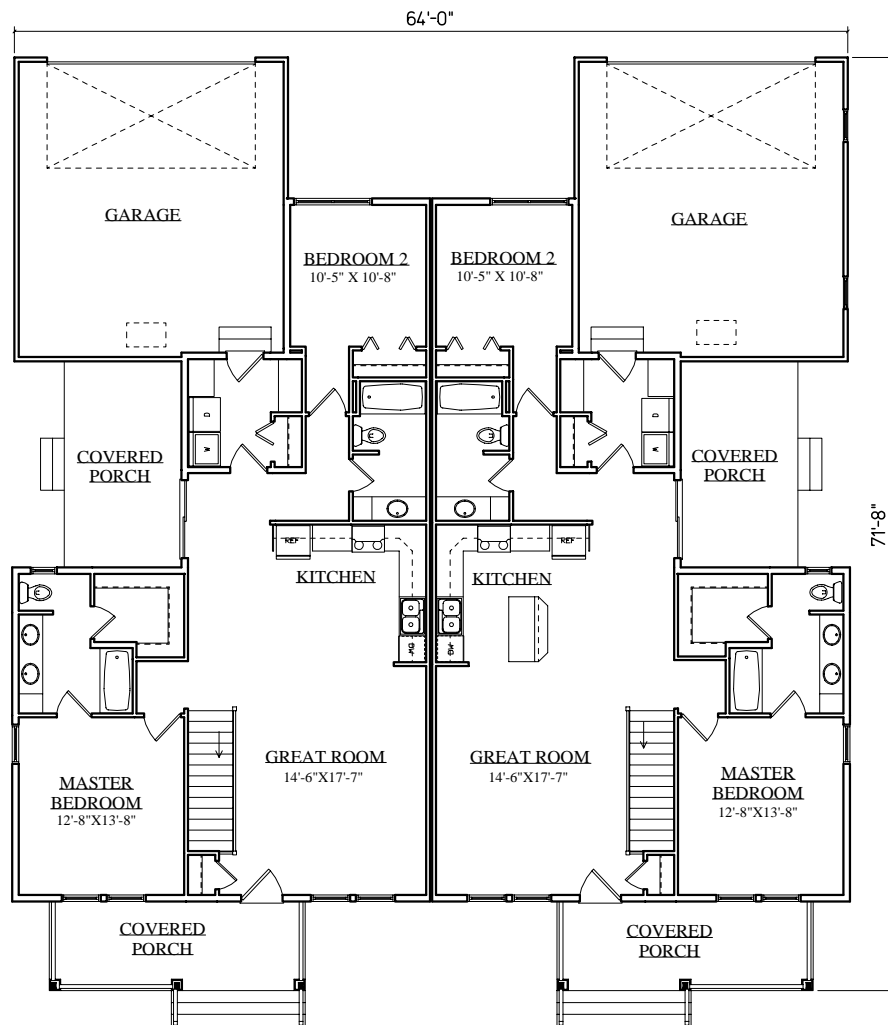
MAIN LEVEL FLOOR PLAN

1,473 SQ. FT. (THIS SIDE)

PLAN NO. 1236-05



FRONT ELEVATION



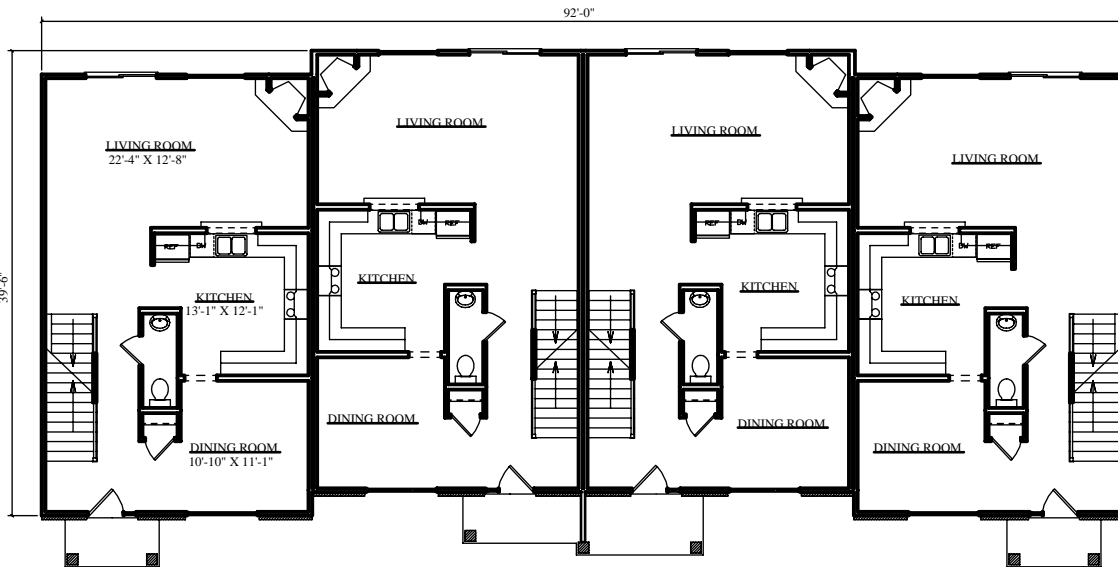
MAIN LEVEL FLOOR PLAN

1,276 SQ. FT. EACH SIDE

PLAN NO. 2015-06



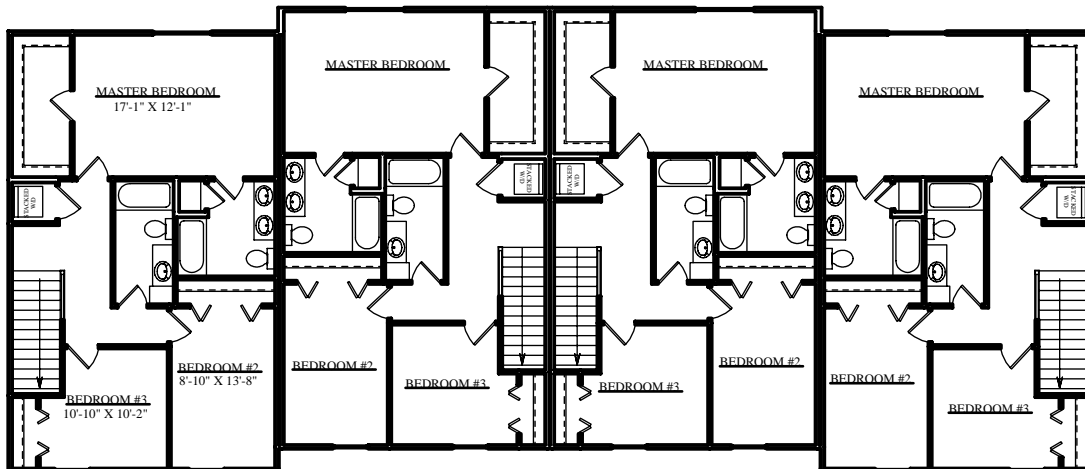
FRONT ELEVATION



MAIN LEVEL FLOOR PLAN

1,682 TOTAL SQ. FT.

862 SQ. FT. EACH UNIT



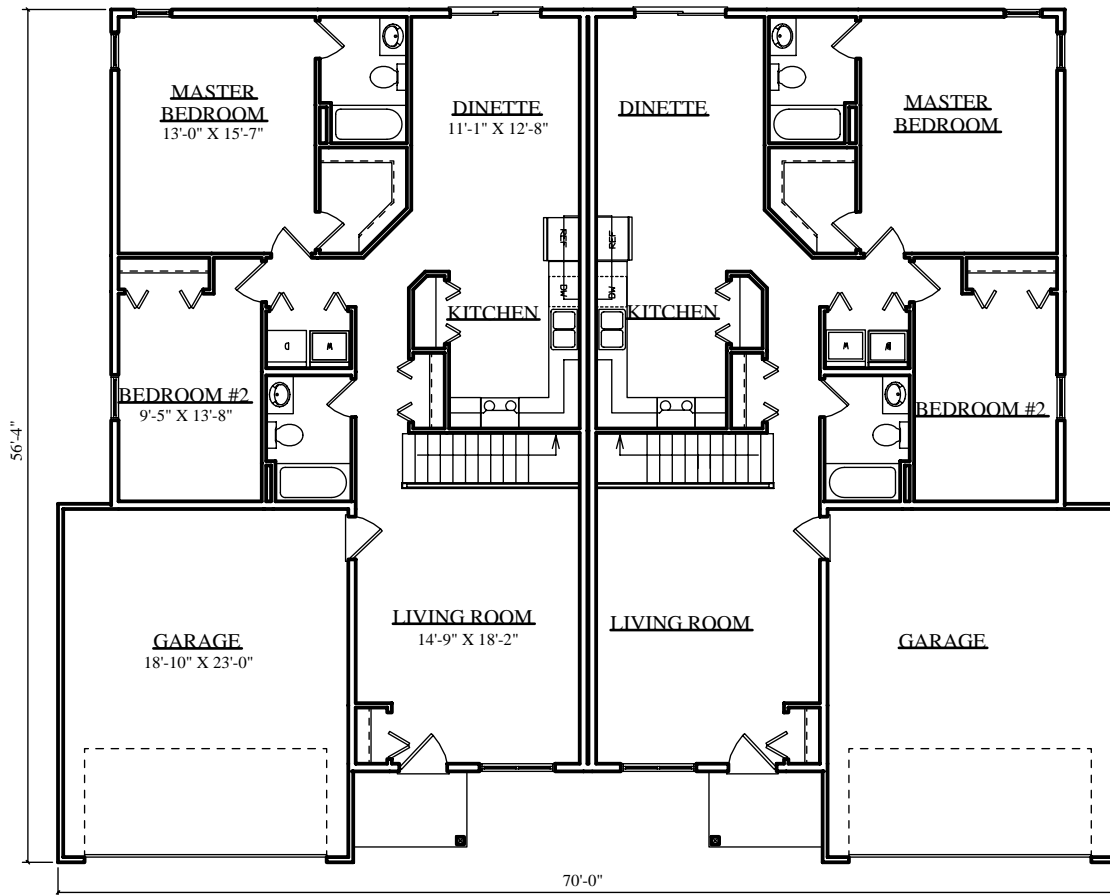
UPPER LEVEL FLOOR PLAN

820 SQ. FT. EACH UNIT

PLAN NO. 2019-06



FRONT ELEVATION

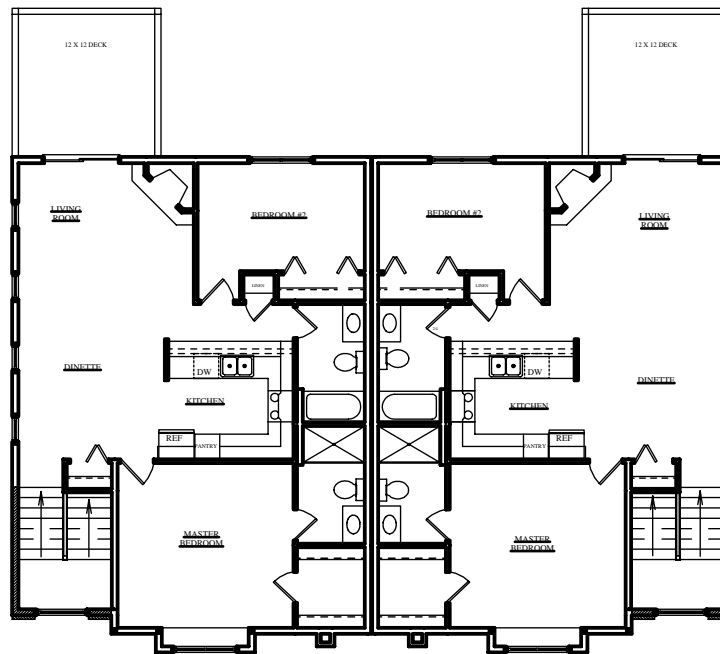


MAIN LEVEL FLOOR PLAN  
1,303 SQ. FT. EACH UNIT

PLAN NO. BMF 011B

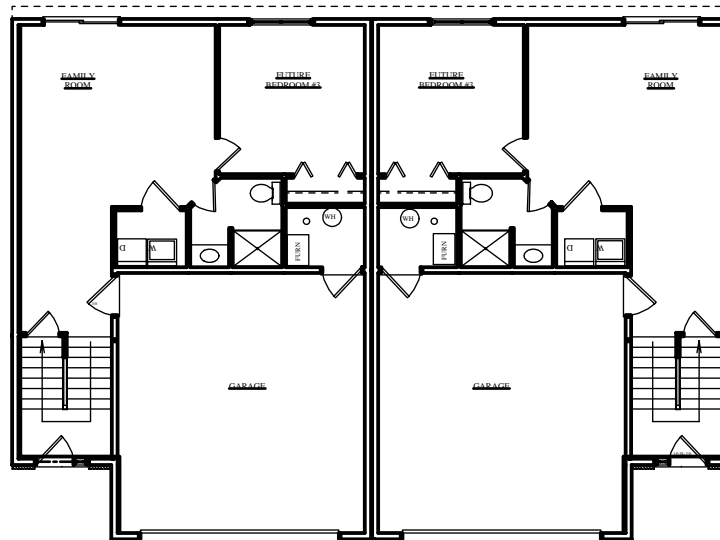


FRONT ELEVATION



MAIN LEVEL FLOOR PLAN

1115 SQ. FT. THIS LEVEL EACH UNIT



LOWER LEVEL FLOOR PLAN

600 SQ. FT. FINISHED THIS LEVEL (EACH UNIT)